



## COMMERCIAL REAL ESTATE

# OFFICE SPACES AVAILABLE!

We present to you the best place for your office: one of the best and most modern real estate properties ever, with a minimalist and modern interior design. Call us today to schedule your showing!



405-358-3311



4251 28th Ave NW Suite #101  
Norman, OK 73069



ichristian@roi-re.com  
allison@roi-re.com

## EXECUTIVE SUMMARY



## PROPERTY OVERVIEW

The perfect opportunity to give your business a brand new, warm, and comfortable place to be. You, Your team, your clients and guests will be happy and productive. This office and office park are well designed to accommodate today's business needs. Office has a welcoming lobby, open break-room, large conference room, plenty of storage, spacious private offices, and a nice open area for that open office concept.

## PROPERTY HIGHLIGHTS

Franklin Business Park is just south of Franklin Road on Flood Avenue. Easy access to and visibility to I-35.

Isaac Christian  
ichristian@roi-re.com  
405-358-3311

Allison Reeves  
allison@roi-re.com  
405-358-3311



AVAILABLE SPACE

Space	Space Size	Lease Rate	Available
<b>4351 Adams Road</b>			
Suite 111	1,356 SF	\$22.00 SF/Yr NNN	NOW
<b>4211 28th Ave NW</b>			
Suite 111	2,766 SF	\$22.00 SF/Yr NNN	NOW
<b>2921 Adams Road</b>			
Suite 111	1,174 SF	\$24.00 SF/Yr NNN	January 2025
Suite 121	2,807 SF	\$24.00 SF/Yr NNN	January 2025
Suite 131	3,970 SF	\$24.00 SF/Yr NNN	January 2025
<b>2931 Adams Road</b>			
Suite 101	2,700 SF	\$24.00 SF/Yr NNN	January 2025
Suite 111	2,663 SF	\$24.00 SF/Yr NNN	January 2025
Suite 121	2,417 SF	\$24.00 SF/Yr NNN	January 2025

Isaac Christian  
 icheistian@roi-re.com  
 405-358-3311

Allison Reeves  
 allison@roi-re.com  
 405-358-3311



AVAILABLE SPACE

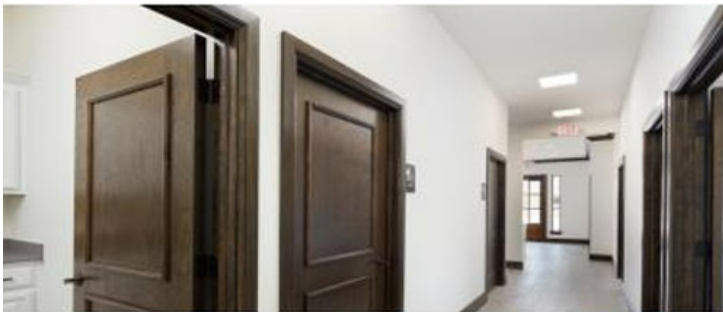
<b>Space</b>	<b>Space Size</b>	<b>Lease Rate</b>	<b>Available</b>
<b>4251 Adams Road</b>			
<b>Suite 101</b>	<b>2,711 SF</b>	<b>\$23.00 SF/Yr NNN</b>	<b>September 2024</b>
<b>2700 Washington</b>			
<b>Suite 101</b>	<b>2,661 SF</b>	<b>\$23.00 SF/Yr NNN</b>	<b>September 2024</b>

Isaac Christian  
ichristian@roi-re.com  
405-358-3311

Allison Reeves  
allison@roi-re.com  
405-358-3311



ADDITIONAL PHOTOS

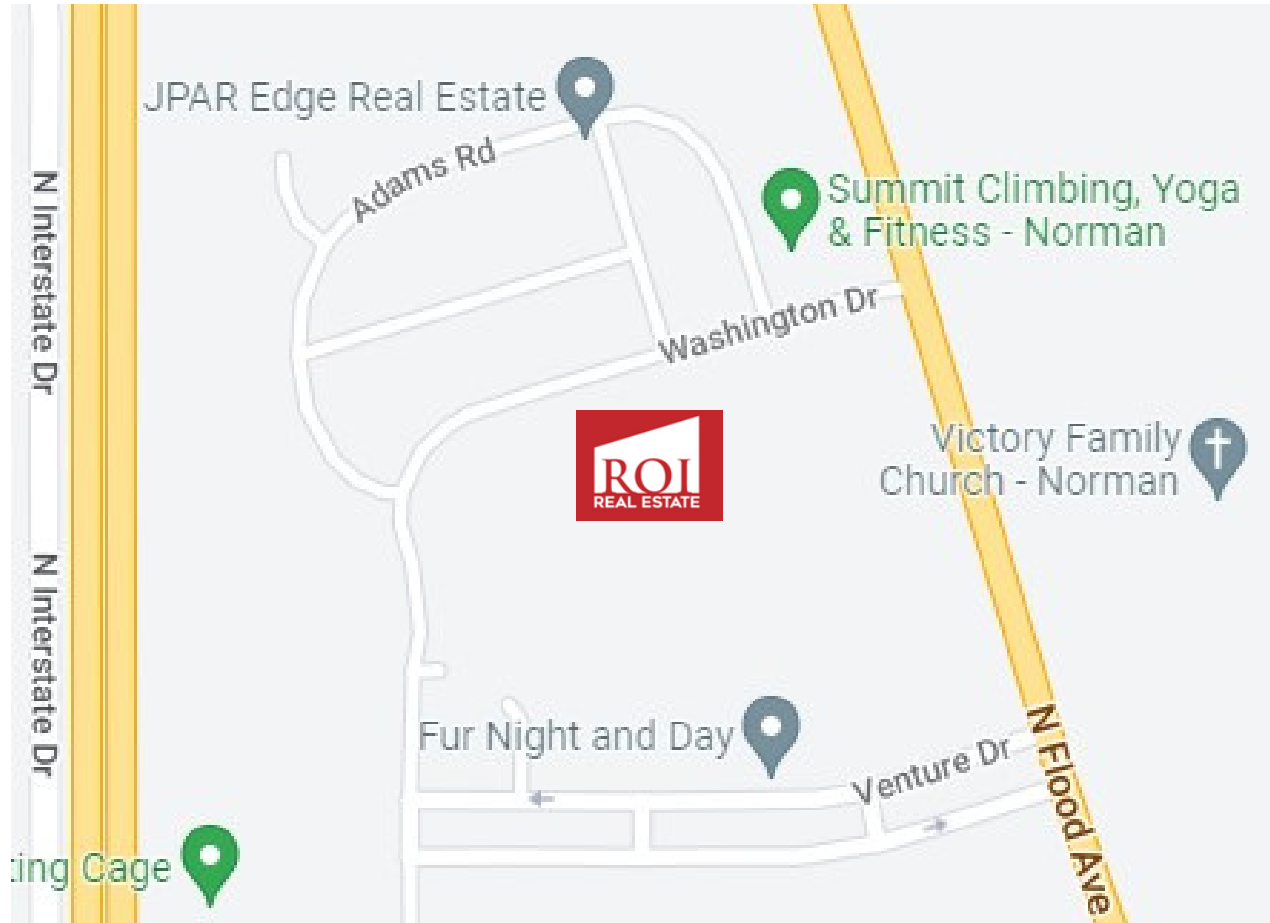


Isaac Christian  
ichristian@roi-re.com  
405-358-3311

Allison Reeves  
allison@roi-re.com  
405-358-3311



LOCATION MAP



Isaac Christian  
ichristian@roi-re.com  
405-358-3311

Allison Reeves  
allison@roi-re.com  
405-358-3311

